



VALLEY ROAD BRIDGE OVER THE PASSAIC RIVER LOCAL CONCEPT DEVELOPMENT STUDY

Bernards Township, Somerset County, and
Long Hill Township, Morris County, New Jersey

PUBLIC INFORMATION CENTER #1

June 7, 2018



PROJECT TEAM



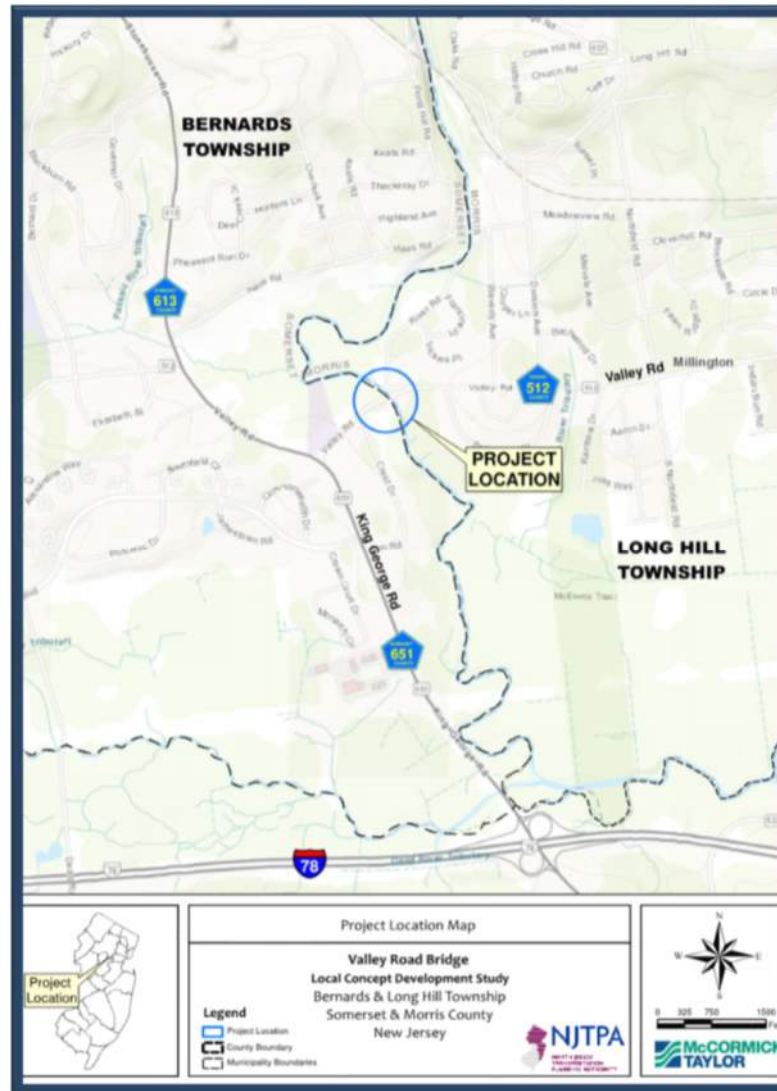
MEETING PURPOSE

- Provide an introduction to the Local Capital Project Delivery Process
- Introduce the Local Concept Development Study
- Present the results of the data collection effort
- Obtain input regarding the Project Purpose and Need

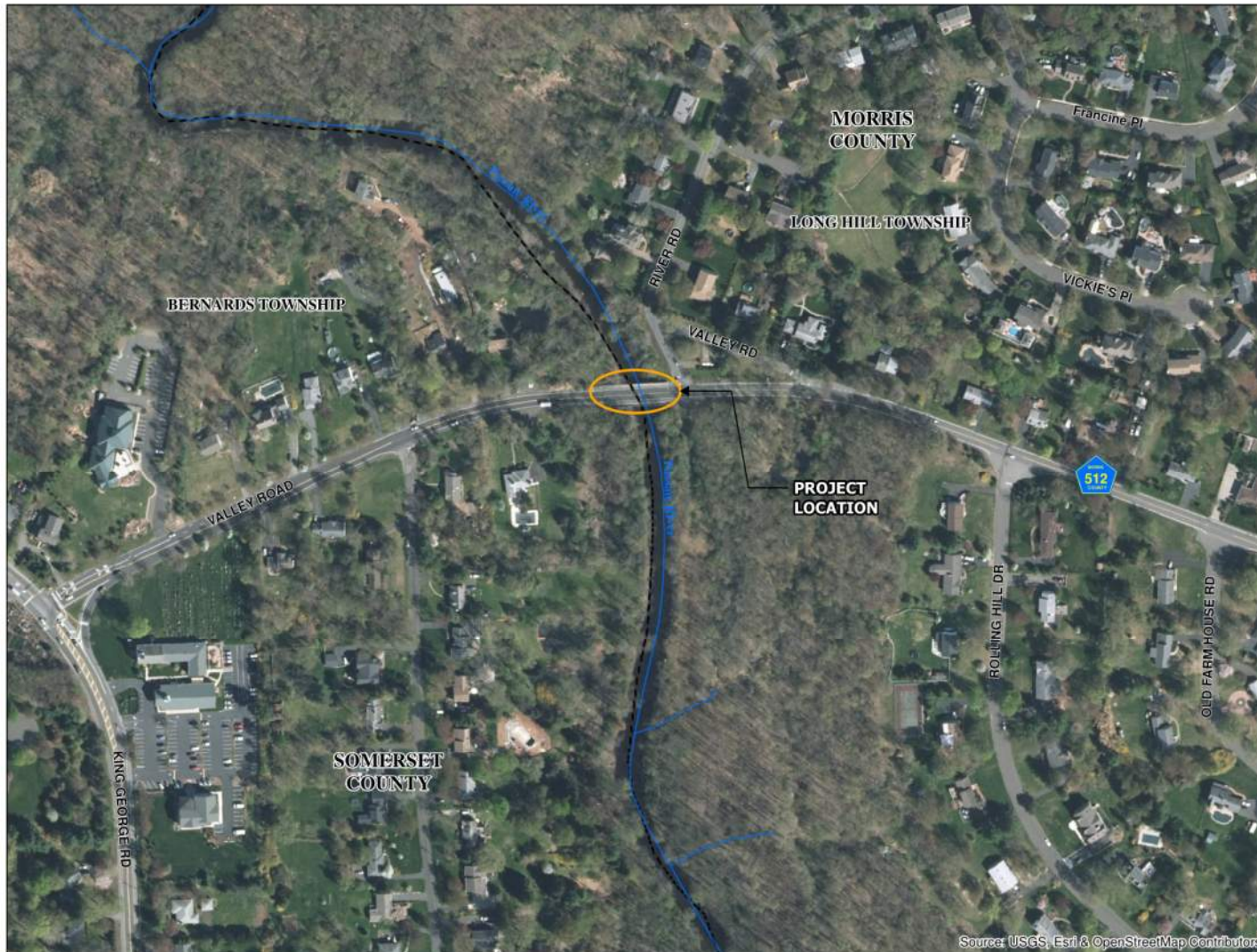
PROJECT OVERVIEW & BACKGROUND

- Valley Road (CR 512) Bridge over Passaic River is located in Bernards Township, Somerset County and Long Hill Township, Morris County
- Bridge was built in 1931
- Bridge is in need of rehabilitation or replacement
- NJTPA, Somerset County and Morris County - Local Concept Development Study was initiated in November 2017
- Local Capital Project Delivery Process provides the opportunity to advance this project with public input and agency collaboration

PROJECT LOCATION MAP



AERIAL MAP



Aerial Map

**Valley Road Bridge
over Passaic River**
Bernards Twp, Somerset County
Long Hill Twp, Morris County
New Jersey



Legend

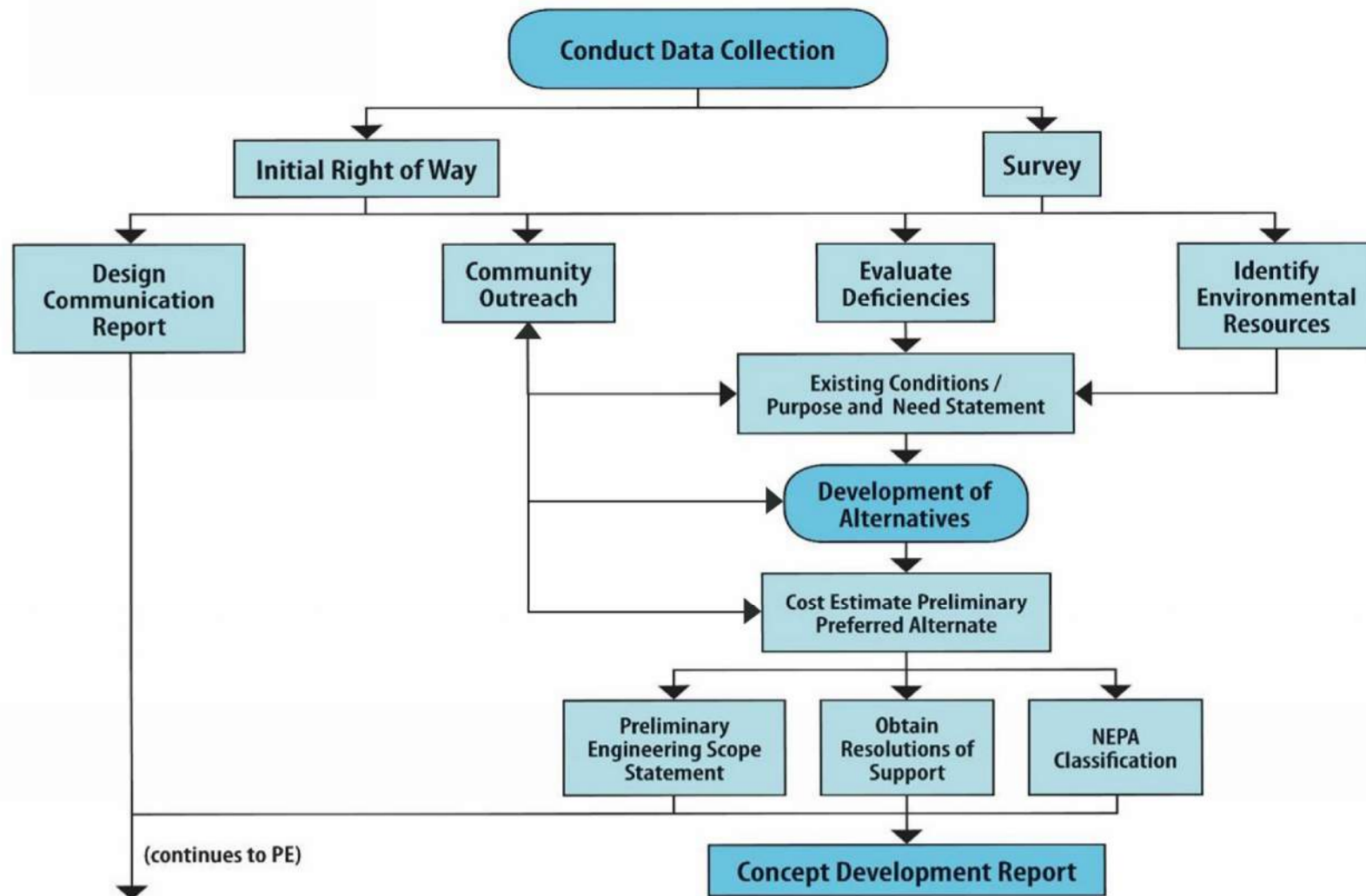
- Streams
- County Boundary
- Municipality Boundary



LOCAL CAPITAL PROJECT DELIVERY PROCESS

Local Concept Development	Local Preliminary Engineering	Final Design/Right of Way Acquisition	Construction
<ul style="list-style-type: none"> • Data Collection • Initiate Public Outreach Efforts • Purpose and Need Statement • Alternatives Development and Analysis • Select Preliminary Preferred Alternative • NEPA Classification • Local Concept Development Report 	<ul style="list-style-type: none"> • Continue Public Outreach Efforts • Preliminary Design • Preliminary ROW Documents • Preliminary Engineering Plans • Preliminary Construction Cost Estimate and Schedule • Approved Design Exception Report • Approved NEPA Environmental Document • Local Preliminary Engineering Report 	<ul style="list-style-type: none"> • Continue Public Outreach Efforts • Final Design • Final ROW Documents and ROW Acquisition • Final Contract Plans and PS&E Package • Final Utility Relocation Schemes • Secure Environmental Permits • Environmental Reevaluation 	<ul style="list-style-type: none"> • Continue Public Outreach Efforts • Complete Construction • As-Built Plans • Close-Out Documentation

LOCAL CONCEPT DEVELOPMENT PROCESS



VALLEY ROAD BRIDGE DATA

- Year Built: 1931
- Bridge Type: Three-span concrete encased multi-stringer
- Overall Bridge Length = 103 feet
- Bridge Roadway Width = 33'-4"
- Posted Speed Limit = 40 MPH
- Posted Weight Limit = 16 Tons
- One lane in each direction
- Outside shoulders: 2' wide WB, 4' wide EB
- 5'-6" Sidewalks in each direction
- 2018 AADT = 9,329 vehicles per day

VALLEY ROAD



*Valley Road east approach to bridge,
looking west*



*Valley Road west approach to bridge,
looking east*

EXISTING BRIDGE CONDITION

- The bridge is in overall poor condition due to the condition of the substructure and low inventory ratings
- The substructure is in poor condition due to scaling and efflorescence throughout.
- The bridge is structurally deficient due to poor substructure condition and low inventory ratings (posted for 16 tons weight limit)
- Sufficiency Rating is 45.5 out of 100 (17th Cycle)

EXISTING BRIDGE PHOTOS



North fascia, looking southwest



South fascia, looking west

EXISTING BRIDGE CONDITION



Top of deck, looking northeast



*Concrete Pylon @
southeast corner*

EXISTING BRIDGE CONDITION



South fascia @ east pier



Under bridge, looking at north pier

EXISTING BRIDGE CONDITION









North fascia @ east pier



West abutment, looking southwest

ENVIRONMENTAL CONSTRAINTS MAP



ENVIRONMENTAL CONSTRAINTS MAP
Valley Road Bridge over Passaic River Bernards Twp, Somerset County Long Hill Twp, Morris County New Jersey
 NORTH JERSEY TRANSPORTATION PLANNING AUTHORITY
 
Legend <ul style="list-style-type: none">StreamsMunicipality BoundaryHighlands Planning AreaFreshwater WetlandsPassaic River Park
 0 200 Feet
 Project Location


SITE CONSTRAINTS



*NJ American Water Booster Station
located east of bridge*



*Wastewater Pump/Generator located
west of bridge*

SITE CONSTRAINTS



Passaic River Park entrance



Trail entrance in Passaic River Park

ENVIRONMENTAL PROCESS

- Federally funded projects require National Environmental Policy Act (NEPA) documentation, including Section 106 Consultation and Section 4(f)
- Environmental Screening Report identifies environmental resources and concerns
- The Preliminary Preferred Alternative will seek to avoid, minimize and/or mitigate environmental impacts
- Coordination with permitting agencies will occur throughout the process
- Process includes community involvement and public outreach

PROJECT STATUS

- Project initiated in November 2017
- Ongoing Data Collection Efforts
 - Performed Base Mapping and Project Survey
 - Completed Environmental Screening Report
 - Obtained and reviewed Bridge Inspection Reports, As-Built Plans, Crash Data, and Traffic Data
 - Identified existing utilities
 - Conducted Traffic Counts and Crash Analysis
 - Identified existing Substandard Design Elements
 - Completed existing hydrology & hydraulic analysis
 - Prepared Draft Project Fact Sheet
 - Initiated Public Outreach efforts
 - Began developing Draft Purpose and Need

PURPOSE AND NEED

- Project Purpose defines the transportation problem to be solved
- Project Need provides justification to support the project purpose
- Goals and Objectives include issues that should also be addressed as part of the solution
- Purpose and Need Statement is required for any project that will require NEPA documentation

PROJECT SCHEDULE

- 18 month completion schedule
- **Major Milestones**
 - Purpose and Need Statement – June 2018
 - Development of Conceptual Alternatives – July 2018
 - Selection of Preliminary Preferred Alternative – November 2018
 - Submission of Draft Local Concept Development Report – March 2019
 - Completion of Local Concept Development Phase – June 2019

COMMUNITY INVOLVEMENT SCHEDULE

Project Introduction and Purpose & Need

- Local Officials Briefing #1 – April 26, 2018
- Stakeholders Meeting #1 – June 7, 2018
- Public Information Center #1 – June 7, 2018

Obtain Input on Conceptual Alternatives

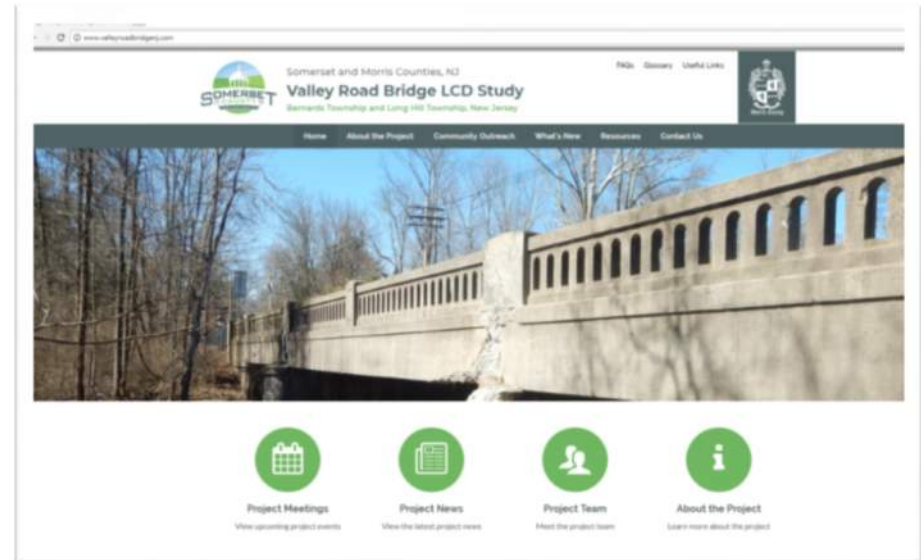
- Local Officials Briefing #2 – Summer 2018
- Stakeholders Meeting #2 – Summer 2018
- Public Information Center #2 – Summer 2018

Selection and Presentation of Preliminary Preferred Alternative

- Local Officials Briefing #3– Fall 2018
- Public Information Center #3 – Fall 2018

PROJECT WEBSITE AND SOCIAL MEDIA

- PROJECT WEBSITE
 - <http://www.valleyroadbridgenj.com/>
- TWITTER
 - @ValleyRdBridge
 - <https://twitter.com/ValleyRdBridge>
- POWERPOINT PRESENTATION
 - will be posted on the project website



PROJECT CONTACT INFORMATION

BRIAN MAURER

Somerset County Principal Bridge Engineer

maurer@co.somerset.nj.us

MEGHAN PACCIONE

Morris County Senior Engineer

mpaccione@co.morris.nj.us

RICHARD BRUNDAGE

NJTPA Project Manager

rbrundage@njtpa.org



THANK YOU

For more information
or to contact us:



Visit our website: www.ValleyRoadBridgeNJ.com



Follow us on Twitter: @ValleyRdBridge